

SONY.

Car Stereo Service Bulletin

Sony Service Company - Technical Services
A Division of Sony Corporation of America
Sony Drive, Park Ridge, New Jersey 07656

Model: CDX-U500

No.281

Subject: "ERROR" or "RESET" Appears On The
Controller's Display, And/Or The CD Changer
Does Not Operate.

Date: April 30, 1993

Symptom:
(65)

The display of the CD changer controller may show "ERROR" or "RESET" and the CD changer may not operate. If the changer does operate, it may exhibit erratic functions, such as not playing the first or second disc. Also, one disc may remain loaded in the mechanism when the magazine is ejected. When the unit is turned on, it may begin playing the first selection of the next disc instead of resuming from where it left off when the unit was turned off.

Solution: Install the Service Kits listed below according to the following instructions.

REF	DESCRIPTION	PART NUMBER
-	SERVICE KIT	X-3366-054-1
-	SERVICE KIT	X-3365-589-1

NOTE: There are several parts which are duplicated in both kits. Referring to figure 1A as a guide, remove the following parts from the kit with part # X-3365-589-1 and add them to the kit with part # X-3366-054-1:

Bearing, EV (ref.11)
Diode, 1GWJ42 (ref.10)
Switch, Push, 1 Key (ref. 11)
Lever (X) Ass'y (ref. 13) 3 pieces
Cushion (ref. 14)
Spacer, S (ref. 15)
Pasteboard (ref. 16)
Lever, Slide (ref. 17)
Switch, Push, 1Key (ref. 18)

The remaining parts in the kit with part # X-3365-589-1 may be discarded.



PRINTED ON RECYCLED PAPER

(Continued)

Reference: Technical News ME-92033

Autoflagged - NO

PRINTED IN USA
CSA-14493-3

CSA - 14 CD Player

Procedure

1- Referring to figure #1B as a guide, label the 3 small plastic bags with the letter "B", "C", or "D" by using a ball point pen or other suitable marker (the large plastic bag is bag "A"). This makes it easier to find the individual parts as they are called out in the instructions.

2- Remove the EV chassis block assembly from the main chassis by following the disassembly instructions in the service manual. **Discard the 3 "X"-Lever assemblies (figure 5, items 27), but save the split washers.** They will be used to secure the improved X-Levers later.

3- Chucking Plate Improvement

Note: During this procedure, be careful not to hold the EV chassis from the points indicated as items # 16 in figure 2. This will prevent bending of the DH springs.

3A- Remove and discard the split washers (figure 2, item 2) which secure the chucking plate bracket to the "R" service arm assembly (figure 2, item 26). If there are additional plastic washers found beneath the split washers, discard them also.

3B- Replace the chucking plate (figure 2, item 1) and the chucking plate bracket (figure 2, item 17) with the improved ones from the kit (bag "A").

3C- Secure the chucking plate and chucking plate bracket with the improved split washers from the kit (these are the 2 smaller washers found in bag "C").

4- KW Gear Torque Improvement

4A- Remove and discard the split washer and "F"-spring (figure 3, items 3 & 4) from the KW gear assembly.

4B- Secure the KW gear assembly with the improved "F"-spring and split washer from bag "D". **Make sure that the peak of the "F"-spring is facing towards the split washer.**

5- SL Gear Improvement:

5A- Remove and discard the 2 split washers (figure 2, items 7) which secure the slide lever, then remove the side lever.

5B- **Note the position of the SL gear** (figure 3, item 5), then remove and discard the SL gear and the split washer (figure 3, item 6) which secures it to the EV chassis. **Be careful not to lose the brass bushing mounted to the SL gear.**

5C- Mount the improved SL gear (bag "A") onto the EV chassis in **the same position as the original SL gear**, and secure it with a split washer from bag "B".

5D- Install the brass bushing onto the post on the new SL gear, then install the improved slide lever and secure it with the 2 large split washers in bag "C".

6- EV Gear, EV Bearing, And Rack Assembly Improvement

6A- Remove the screw which secures the driver board (figure 2, item 18) and disconnect the flex cable from CNJ-502, then move board away from the EV gear assembly (figure 3, item 19).

6B- Remove the 2 screws which secure the EV bearing bracket (figure 3, item 28), then remove the bracket and bearing (figure 3, item 29). Discard the bearing.

6C- Remove the 2 screws which secure the EV gear assembly and lift the assembly out of the EV chassis.

6D- Remove the worm wheel and split washer (figure 3, items 21 and 22) from the EV gear assembly. **Do not discard these parts; they must be re-used.**

6E- Remove and discard the EV gear and split washer (figure 3, items 8 and 9) from the EV gear assembly.

6F- Install the improved EV gear (bag "A") and split washer (bag "B") onto the EV gear assembly.

6G- Install the worm wheel and split washer which were removed in step 6D onto the EV gear assembly.

6H- Install the EV gear assembly back into the EV chassis and secure with 2 screws.

6I- Secure the improved EV bearing and the bracket. Secure the left side screw tightly first, then secure the right side screw.

6J- Connect the flex cable into CNJ-502 on the driver board and secure the driver board to the chassis, then install the EV chassis back into the main chassis.

6K- Rotate the elevator motor shaft until any slot on the EV gear is facing straight up (refer to inset, figure 5).

6L- Install the improved rack assembly (figure 5, item 14; bag "A"). There should be approximately 1mm of space between the bottom of the EV chassis and the main chassis. After tightening the screw which secures the rack assembly, verify that the slot on the EV gear is still facing straight up (refer to inset, figure 5).

7- KMZ Lever Torque Improvement

7A- Remove the heat sink (figure 5, item 31) from the right side of the chassis.

(Continued)

7B- Remove the magazine compartment cover plate.

7C- Remove the worm wheel and split washer (figure 4, items 23 and 24).
Discard the split washer

7D- Remove and discard the split washer (figure 4, item 11) and lift the KMZ lever assembly from the chassis. Also, discard the round washer (figure 4, item 10) found beneath the KMZ lever assembly.

7E- Remove the split washer, KS gear, and "F"-spring (figure 4, items 13, 25, and 12) from the KMZ lever assembly. Discard the "F"-spring and split washer.

7F- Install the improved "F"-spring (bag "D"), the KS gear, and the "E" ring (bag "D" onto the KMZ lever assembly. Make sure that the peak of the "F"-spring faces upward towards the KS gear.

7G- Install the improved large round washer (bag "D") around the post to which the KMZ lever assembly is mounted.

7H- Install the KMZ lever assembly onto the post, and secure it with an improved split washer (bag "B").

7I- Install the worm wheel and secure it with an improved split washer (bag "B").

8- Miscellaneous Improvements (refer to figure 7)

8A- Add a 1GWJ42 diode between the clock line and ground on the solder side of the MD board. Do not add this diode if a diode is already mounted in this location.

8B- Add an 18 gauge jumper wire across the emitter and collector of Q-18 on the servo board. This is not necessary if Q-18 is not mounted on the servo board.

8C- Remove SW-653 from the MD board and replace it with the improved one from the kit. Add the clear plastic insulator to the board below the switch lever.

8D- Remove SW-654 from the MD board and replace it with the improved one from the kit.

9- Final Assembly And Check-out

9A- Install the magazine compartment cover plate.

9B- Install the heat sink.

9C- Install the rubber cushion (figure 6, item 30) to the underside of the chassis top cover

9D- Install the chassis top cover. Use an improved screw (figure 5, item 15; bag "A") to secure the top cover to the improved rack assembly. Apply locking compound to all of the screws which secure the chassis top cover.

9E- Connect a CD changer controller or the Unilink Jig to the unit and check for normal operation. **IMPORTANT! Ambient light in the vicinity of the unit may cause the photo transistor sensors to be falsely triggered which can and will cause improper operation of the elevator and disc loading mechanisms. Blocking the ambient light from the sensors will prevent the troubleshooting of problems which do not exist.**

9F- Install all cabinet parts and verify proper operation again.

10- Preparing The Unit For Shipment (refer to figure 8)

10A- Wrap the caution label around the unit and secure it with tape.

10B- Insert the 2 transport screws (bag "A") into the 2 plastic holder strips (bag "A").

10C- Lock the EV chassis by screwing in the 2 transport screws from the bottom side of the unit. Tape the plastic strips to the caution label. The bottom covers of some units have holes which are too small for the transport screws. In this case, replace the bottom cover with part # 3-368-785-01.

10D- Advise the customer to cover up the transport screw access holes in the bottom cover with the supplied labels after the transport screws have been removed.

(Continued)

**SERVICE KIT CDX-
X-3365-589-1**

	PARTS NUMBER	PARTS NAME	Q'ty
①	3-364-461-04	BEARING (EV)	1
②	X-3362-488-4	RACK ASSY	1
③	3-371-098-02	LABEL, SCREW CAUTION	1
④	3-377-719-01	WASHER, COTTER POLY.	1
⑤	3-377-720-01	SLIDER, POLYETHYLENE	2
⑥	3-371-533-03	SHEET (TRANSIT SCREW)	2
⑦	3-371-503-11	SCREW	2
⑧	7-685-781-09	TAPPING +PTT 2x4	1
⑨	0-453-665-00	WASHER, POLYETHYLENE	1
⑩	8-719-821-35	DIODE 1GWJ42	1
⑪	1-571-754-51	SWITCH, PUSH(1KEY)	1
⑫	3-382-718-01	GEAR (SL)	1
⑬	X-3362-348-3	LEVER (X) ASSY	3
⑭	3-346-962-01	CUSHION	1
⑮	4-920-366-01	SPACER (S)	1
⑯		PASTERBOARD	1
⑰	3-364-380-04	LEVER, SLIDE	1
⑱	1-571-754-31	SWITCH, PUSH(1KEY)	1
⑲	3-371-953-03	LABEL, TRANSIT SCREW	1
⑳		PLASTIC BAG	2
㉑		SLIP	1

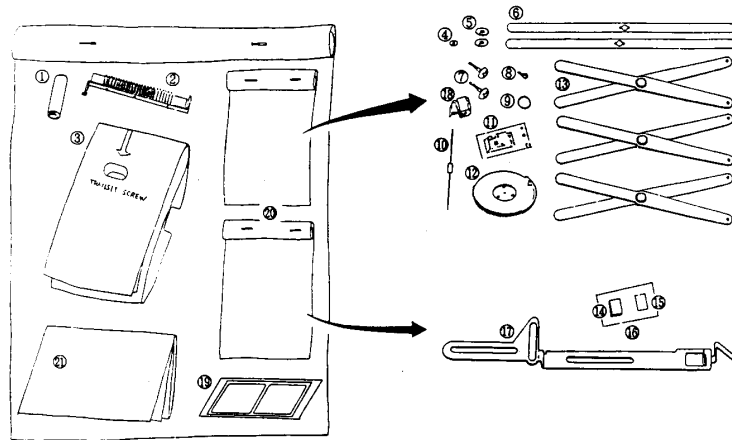


FIG.1a

SERVICE KIT CDX-
X-3366-054-1

	PARTS NUMBER	PARTS NAME	Q'ty
A	① 3-371-533-03	SHRETT (TRANSPORT SCREW)	2
	② 3-380-759-02	PLATE (C), CHUCK	1
	③ 3-364-418-04	GEAR (SL)	1
	④ X-3362-488-4	RACK (ASS'Y)	1
	⑤ 3-364-424-02	GEAR (EV)	1
	⑥ 3-371-503-11	SCREW (TRANSPORT)	2
	⑦ 7-685-781-09	SCREW #PTT 2x4(S)	1
	⑧ 3-371-098-02	LABEL, SCREW CAUTION	1
	⑨ 3-371-953-11	LABEL (TRANSPORT SCREW)	1
	⑩ 3-371-953-21	LABEL (TRANSPORT SCREW)	1
	⑪ X-3364-480-2	BRACKET (CP) ASS'Y [only for CDX-U4000(silver)]	1
B	⑫ 3-377-719-01	WASHER, POLYETHYLENE	4
C	⑬ 3-377-720-11	WASHER, POLYETHYLENE	2
	⑭ 3-342-940-01	WASHER (M)	2
D	⑮ 3-377-719-11	WASHER (M)	1
	⑯ 3-384-276-01	RING, RETAINING	1
	⑰ 3-316-308-01	WASHER	1
	⑱ 3-364-387-11	SPRING (F)	2

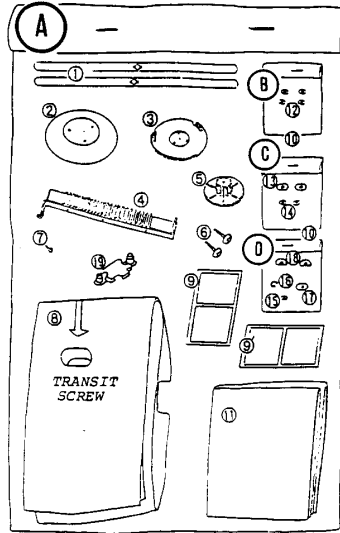
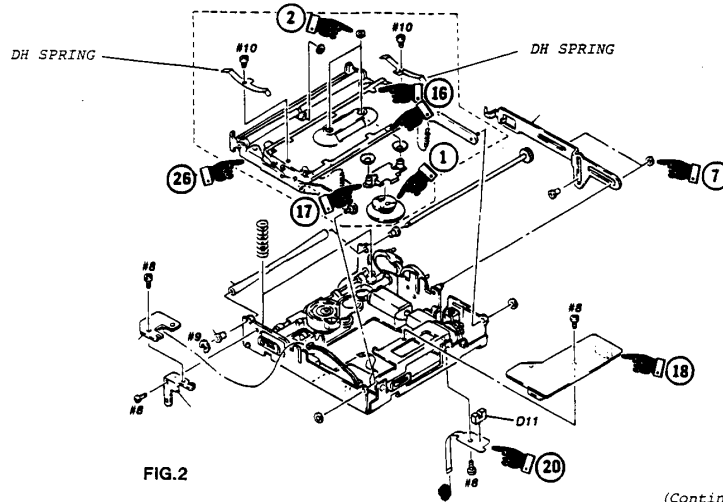


FIG.1b



(Continued)

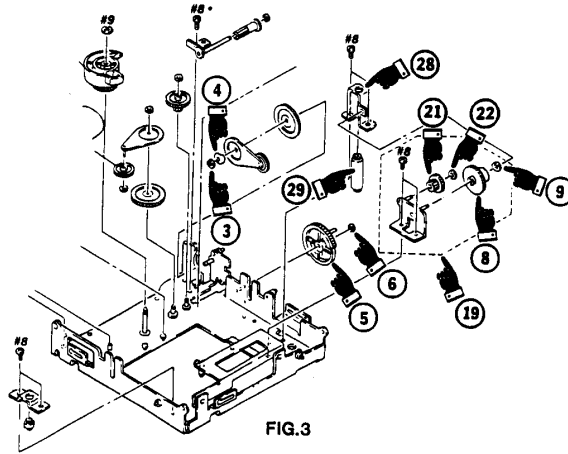


FIG.3

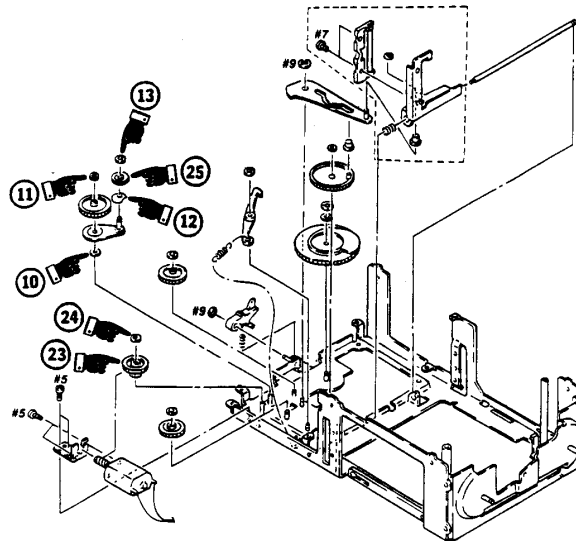


FIG.4

(Continued)

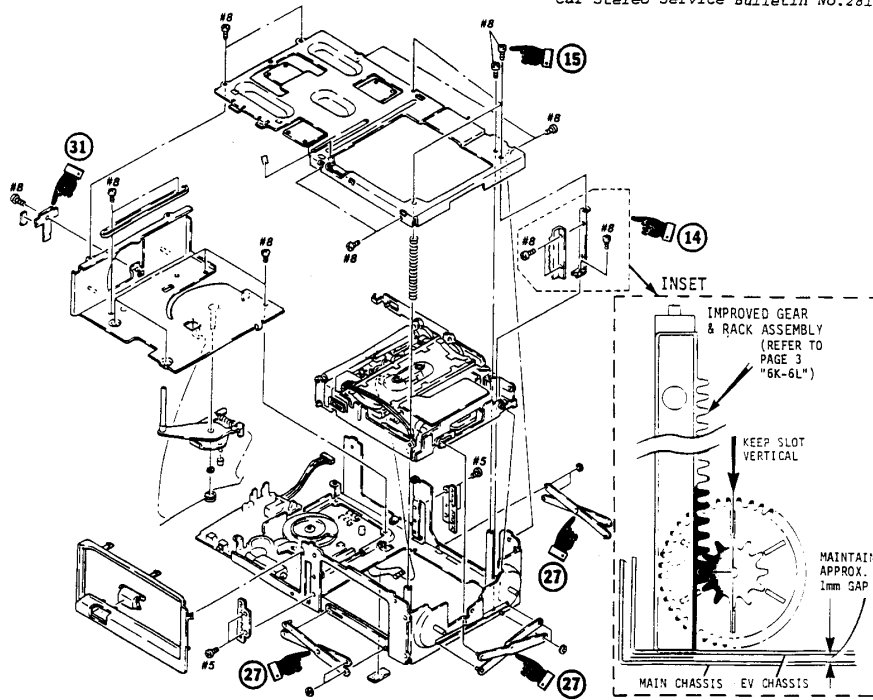


FIG.5

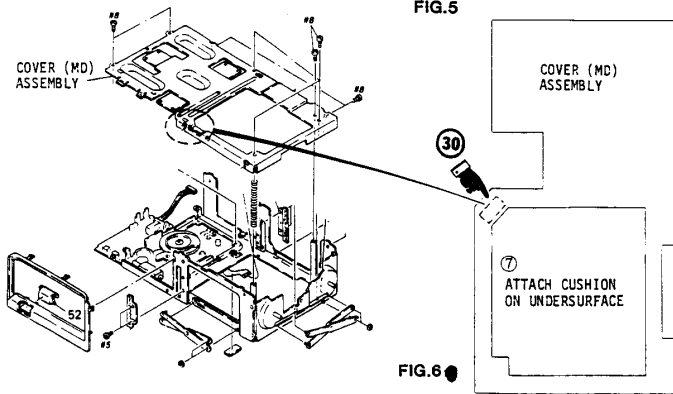


FIG.6

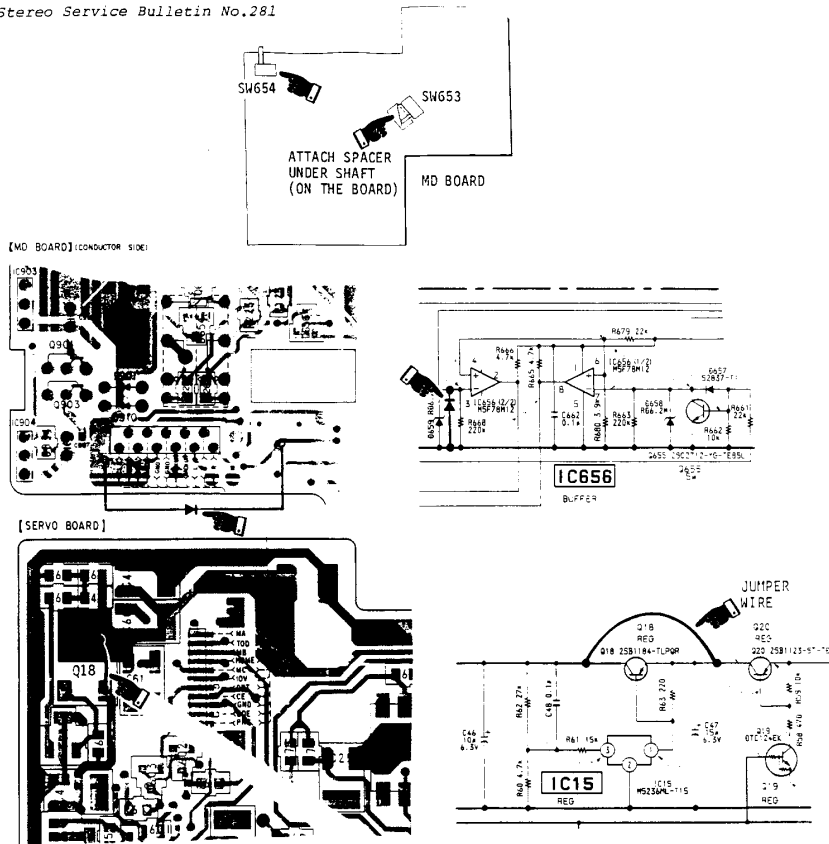


FIG.7

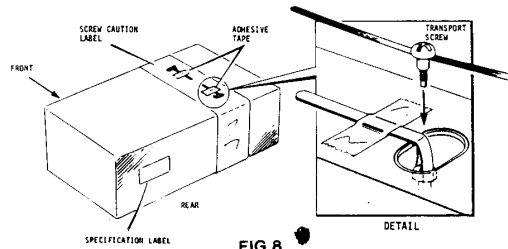


FIG.8